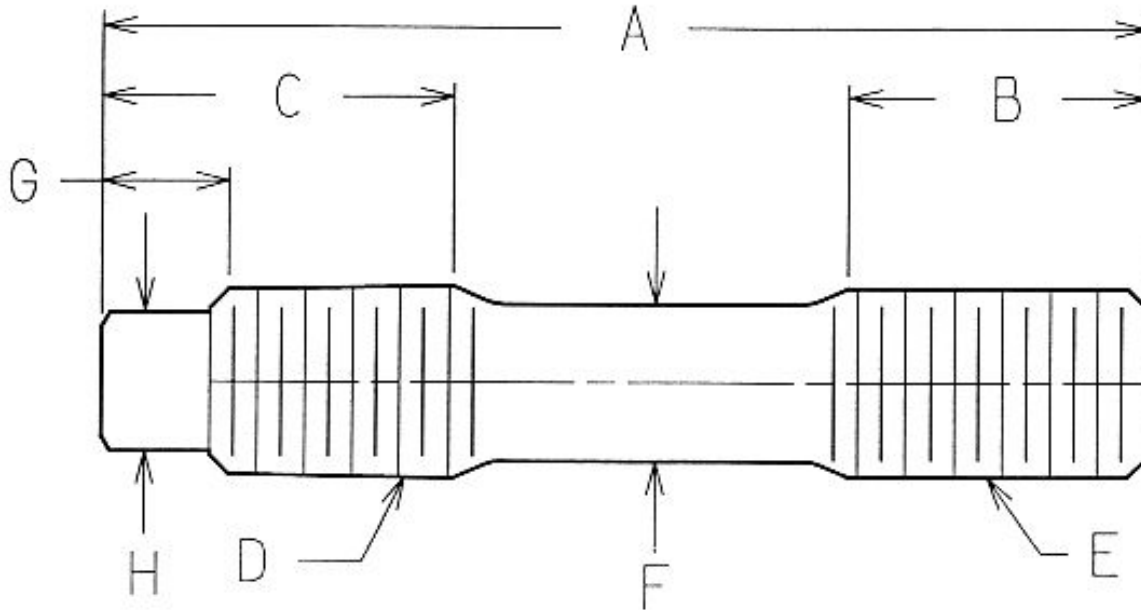




**Dog Point Stud Order Form**



- Overall Length (A) =
- Length of Thread (B) =
- Length of Thread (C) =
- Diameter and Pitch of Thread (D) =
- Diameter and Pitch of Thread (E) =
- Center Relief Diameter (F) =
- Length of Dog Point (G) =
- Diameter of Dog Point (H) =

UNR controlled Root Radius thread is standard.

Unless otherwise specified material will be AISI 4150 Heat Treated, Typical Properties:

151,000 PSI Tensile      133,500 PSI Yield      18.5% Elongation      52.2% Reduction in Area  
 302 / 321 BHN

Fax, mail, or e-mail your order to:

Macro Mfg. Co.  
 9625 N. Ramsey Blvd.  
 Portland, Or 97203  
 Phone: (503) 285-7501  
 Fax: (503) 283-3664